

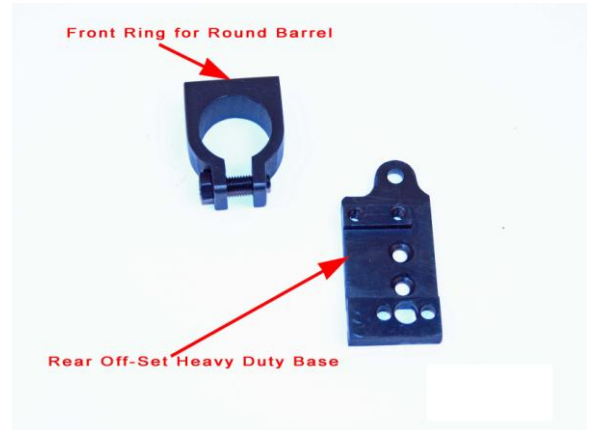


Hi-Lux, Inc.

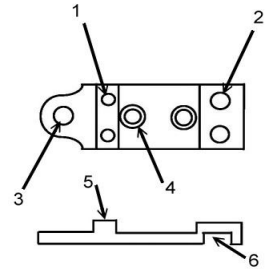
3135 Kashiwa Street, Torrance, CA 90505, Tel: (310) 257-8142, Fax: (310) 257-8096

INSTALLTION INSTRUCTION

On top of the front mount there is a 3/8" dovetail. You can put the front scope ring into the 3/8" dovetail on top of the front mount. Clamp the front mount in the front of the barrel. Slide the front scope ring into the dovetail on this front mount and off-set the scope ring to the left. Line up the front and the rear scope mount, and then tighten the big socket head screw and the two screws on the front scope ring.



The rear offset heavy-duty base has the same hole dimensions as our regular heavy-duty base. Please see the figure on the right. To put the heavy duty back portion (6) on top of the dovetail



block and tighten the two screws from the base into the block. Use the existing hole (3) and drill and tap two 8-40 holes as (4) indicates. Screw the base on the base and lock-tite the screws on the base. After you secure the heavy-duty base, then mount the rear scope mount on top (5). See the mounting details in the scope instruction manual. If you have any questions about this product, please feel free to contact us at the toll free no. 1-888-HI-LUX-12 (445-

8912) or send us an e-mail to techsupport@hi-luxoptics.com.

WARNING:

You must install the mount securely before you shoot the rifle. This should be done by a competent gunsmith.